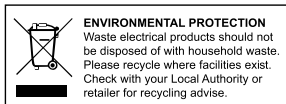


# Hilka

84995505  
82636

## 3.5 Gallon Parts Washer



## TECHNICAL SPECIFICATION

---

Voltage	230 V
Frequency	50 Hz
Power rating	25 W
Max pump flow	50 gph
Max flow from hose	1.3L/min
Maximum working capacity	16 Litre
Internal tank dimensions (h/w/L)	3.5 gallon 214 x 296 x 396mm
Weight	8.5kg

## INTENDED USE

---

The **3.5gallon parts washer** is for the use of degreasing engine parts and similar. The machine is on no account intended for other purposes.

## SAFETY INSTRUCTIONS

---

The following symbols are used throughout this manual:



Denotes risk of personal injury, loss of life or damage to the tool in case of non-observance of the instructions in this manual.



Denotes risk of electric shock.

Carefully read this manual before using the parts washer.

Make sure that you know how the parts washer functions and how to operate it. Maintain the parts washer in accordance with the instructions to make sure it functions properly.

### Warning!

When using electrical powered tools always observe the safety regulations applicable in your country to reduce the risk of fire, electric shock and personal injury. Read **all** the safety instructions before using the tool.



## PERSONAL SAFETY

---

Use Personal Protection Safety Equipment Protect eyes with safety glasses or goggles note: the use of safety protective eyewear without the CE mark can lead to serious injury if the glass breaks.

### Dress Properly

Do not wear loose clothing or jewellery. It can get caught in moving parts. Non-skid footwear is recommended. Wear protective hair covering to contain long hair. Wear protective gloves suitable for the degreasing agent being used – seek information from your degreasing agent supplier.

### Stay Alert

Watch what you are doing. Use common sense. Do not operate tools when tired or after taking alcohol or prescription/ non-prescription drugs.



## OPERATIONAL SAFETY

---

### Concentrate

Do not allow routine, which occurs when using the parts washer frequently, to lead to mistakes. Avoid splashes and spillages.

### Keep work area clean

Cluttered areas and benches invite injuries. Clean up any degreasing agent spillages immediately.

### Consider the work environment

Keep work area well lit.

### Keep children and pets away

Do not let children or pets come into contact with the parts washer, degreasing agent, extension cable or work area.

### Do not abuse the cable

Never pull the cable to disconnect it from the power socket. Keep cable away from heat, oil and sharp edges. Do not touch the metal plug pins when connecting or removing the plug.

### Do not over-reach

Keep a proper footing and balance at **all** times.

### Disconnect tools from power supply

When not in use, before servicing, cleaning and filling with degreaser always switch off and unplug the appliance from the power supply.

### Avoid unintentional starting

Check that the switch is off before plugging in to socket.



## SPECIFIC OPERATIONAL SAFETY

---

### Use the correct degreasing agent

Use a degreasing agent purposely produced for use in parts washer tanks. (Petroleum based or biodegradable based solvents) Do not use any solvent with a flash point below 150°F. (65°C). Do not use petrol. Do not use paint thinners.

### Do not overfill with degreasing agent

Fill the tank with degreaser to just below the level of the parts tray.

### Use in well ventilated areas

Always ensure that the work environment is well ventilated.

### **No Smoking**

Degreasing agents and vapours are flammable. Do not smoke in the vicinity of the parts washer.

### **Do not operate near heat sources**

Do not use the parts washer near heat sources such as heaters, sparks or open flames etc.

### **Do not modify or jam the lid**

Do not alter the lid in anyway in an attempt to fix it in a raised position. The lid has a fusible link and in the event of a fire will automatically fall shut to extinguish the flames.

### **Do not move the parts washer in the event of a fire**

In the event of a fire the fusible link will cause the lid to shut automatically to extinguish the flames.

### **Regularly clean the pump filter**

Ensure that the pump filter is cleaned regularly to prevent blockages and damage to the pump.

### **Do not leave the parts washer operating whilst unattended.**

### **Dispose of waste liquids in accordance with local authority regulations.**

**WARNING!** DO NOT allow uncontrolled discharge of fluids thus polluting the environment.

### **DO NOT use parts washer in wet or damp locations or areas where there is condensation.**



## **ELECTRICAL SAFETY**

---

Always check that the power supply corresponds to the voltage on the rating plate.

### **Guard against electric shock**

This unit contains dangerous voltages. Use a RCD (residual current device) to provide protection against electrical shock. Prevent body contact with grounded surfaces (e.g. pipes, radiator, ranges or refrigerators).

### **Inspect plugs and cables**

Always inspect plugs and cables for wear and damage before connecting the plug to the mains supply.

### **Replacing cables or plugs**

Immediately throw away old cables or plugs when they have been replaced by new ones. It is dangerous to insert the plug of a loose cable in the wall outlet.

### **Extension cables**

Use only three core earthed extension cables suitable for the power input of the tool (minimum cable size 1.5mm<sup>2</sup>). When using a cable reel unwind it fully. Do not use long extension cables.

### **Disconnect tools from power supply Before servicing and cleaning.**

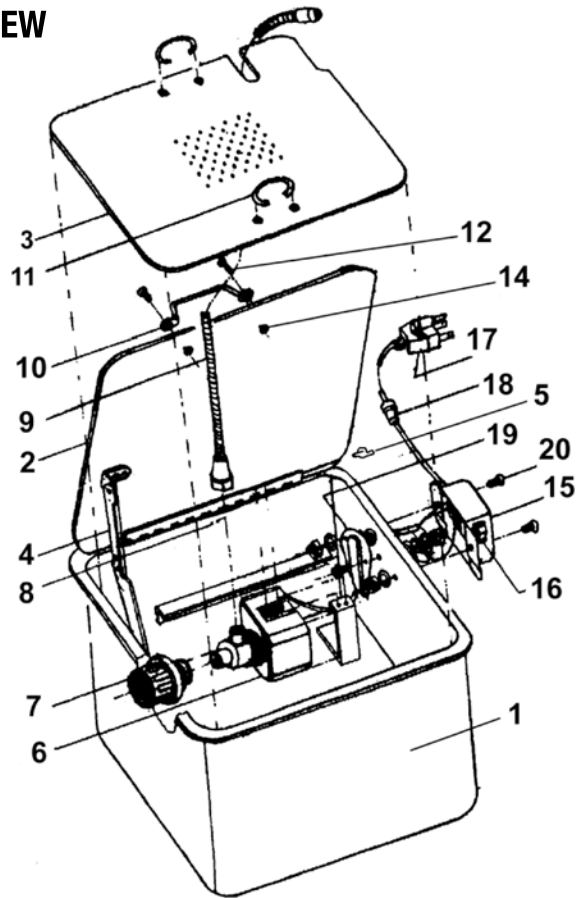
### **Electricity at Work Act 1989**

Requires all portable electrical appliances, if used on a business premises, to be tested by a qualified electrician at least once a year by using a Portable Appliance Tester (PAT)

### **Health and Safety at Work Act 1974**

Makes owners of electrical appliances responsible for the safe condition of the appliance, and the safety of the appliance operator. If in any doubt about electrical safety, contact a qualified electrician.

# EXPLODED VIEW



## SPARE PART LIST

Key No.	Part No.	Description	Key No.	Part No.	Description
1	01	Tank	11	11	Handle
2	02	Lid	12	12	Screw M8 X12
3	03	Removable Work Shelf	14	14	Nut
4	04	Fusible Linked Lid Arm	15	15	Switch Box
5	05	Rivet	16	16	Light Switch
6	06	Pump	17	17	Power Cord
7	07	Filter	18	18	Strain Relief
8	08	Pump Holder	19	19	Cover
9	09	Flexible Spigot	20	20	Screw M4 X 8
10	10	Handle			

## BEFORE OPERATING THE PARTS WASHER

Fit the flexible hose to the pump by screwing into the threaded outlet. Be careful not to force the connection.

- Check the following:  
Does the voltage of the parts washer correspond with the mains voltage.
- Are the mains lead and the mains plug in a good condition.
- In case of a blockage, switch off the parts washer immediately.
- Pull the mains plug from the socket before you fill with degreasing agent.
- Fill the tank to appropriate capacity with degreasing agent for use in parts washers. DO NOT use any other type of solvent.
- **CAUTION!** Ensure you follow any instructions provided with the solvent.
- Fill machine with degreasing agent to just below the shelf inside the washer tank. Ensure the pump is immersed correctly in the solvent.
- Plug machine into a power socket, which corresponds with that on the pump rating plate. Turn the machine on at the switch. The fluid should begin to flow through the flexible pipe.

## WHEN OPERATING THE PARTS WASHER

- Place parts to be cleaned on to the shelf, direct spray nozzle onto parts. Ensure any splash back stays inside the tank. If not reposition the spray nozzle.
- For ground in marks, leave the part to soak in the bottom of the tank. Brush parts with cleaning brush if required.
- Turn off the pump and leave the parts to drain on the shelf
- When cleaning is complete turn the washer off and unplug from the mains power supply.
- **WARNING!** DO NOT allow uncontrolled discharge of fluids thus polluting the environment. Dispose of waste liquids in accordance with local authority regulations.
- Keep the parts washer clean. Remove and clean the filter regularly for best and safest performance.

## IMMEDIATELY SWITCH OFF THE PARTS WASHER IN CASE OF:

- Malfunction of the mains plug, socket or damaged cables.
- Broken switch.
- Smoke or smell caused by scorched insulation.

## MAINTENANCE, CARE AND REPAIR

---

Make sure that the parts washer is not live when carrying out any maintenance work.

### Faults

Below we have listed a number of possible causes and corresponding solutions in case the parts washer does not function, as it should:

- 1. The pump is overheating/ motor is making excessive noise.**
  - The filter slots are covered with dirt.
    - Clean them
  - The motor is defect.
    - Bring your pump to your Hilka dealer for repair.
  - The supply voltage is too low
    - Use a supply, which corresponds to that on the rating label.
  - Hose is blocked
    - Clean hose through.
- 2. The motor does not turn.**
  - The supply voltage is too low
    - Use a supply, which corresponds to that on the rating label.
  - Damaged Motor
    - Bring your pump to your Hilka dealer.

### Defects

The machine should be regularly inspected for the following possible defects and repaired if necessary.

- Damage to the power cord
- Broken switch assembly
- Short circuiting
- Damaged moving parts

## Cleaning

Regularly clean the pump filter, preferably after each use. Maintain the body of the tank by wiping of oils etc. Ensure that the lid hinge is free from dirt and can shut correctly.

## Maintain tools with care

Keep the parts washer and pump clean for better and safer performance. Follow instructions for safety and use. Inspect the parts washer and extension cables periodically and if damaged, have them repaired by a qualified person or authorised service body. Keep handles free from oil or grease. Keep the filter slots clean to prevent pump overheating.

## Check for damaged parts

Do not use the parts washer with damaged parts, before further use a damaged washer must be carefully checked by a qualified person to determine that it will operate properly. Check for alignment of moving parts, binding or breakage of parts, mounting and other conditions that may affect its operation. A damaged part should be properly repaired by an authorised service centre, unless indicated otherwise in the instruction manual. Have defective switches replaced by an authorised service centre. Do not use the parts washer if the switch does not turn on and off.

## Have your tool repaired by an expert

This appliance is manufactured in accordance with relevant safety standards. Only experts must carry out repairing of electrical appliances, otherwise considerable danger for the user may result.

## Storing tools

When not in use tools should be stored in a dry place, out of reach of children.

## Faults

Should a fault occur, e.g. after wear of a part, please contact your local Hilka dealer. In the back of this manual you find an exploded view showing the parts that can be ordered.

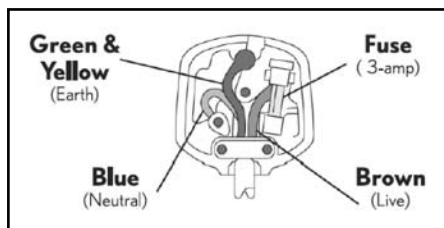
## ELECTRICAL INFORMATION

This product is supplied with a pre-wired mains plug. If the plug needs replacing follow these instructions.

### Wire correctly

The wires in the mains lead are coloured in the following way:

BLUE	•	Neutral
BROWN	•	Live
GREEN / YELLOW		Earth



### Securing wires

Secure wires carefully and firmly to the correct terminals. Secure the mains cable in the plug cord grip firmly. Fit a 3 amp fuse. If a 13amp (BS1363) plug is used a (BS1362) ASTA approved 3-amp fuse must be fitted.

### Recycle/Dispose of old plug and cable

Prevent inadvertent connection to socket and risk of electric shock.

If in doubt always consult a qualified electrician.