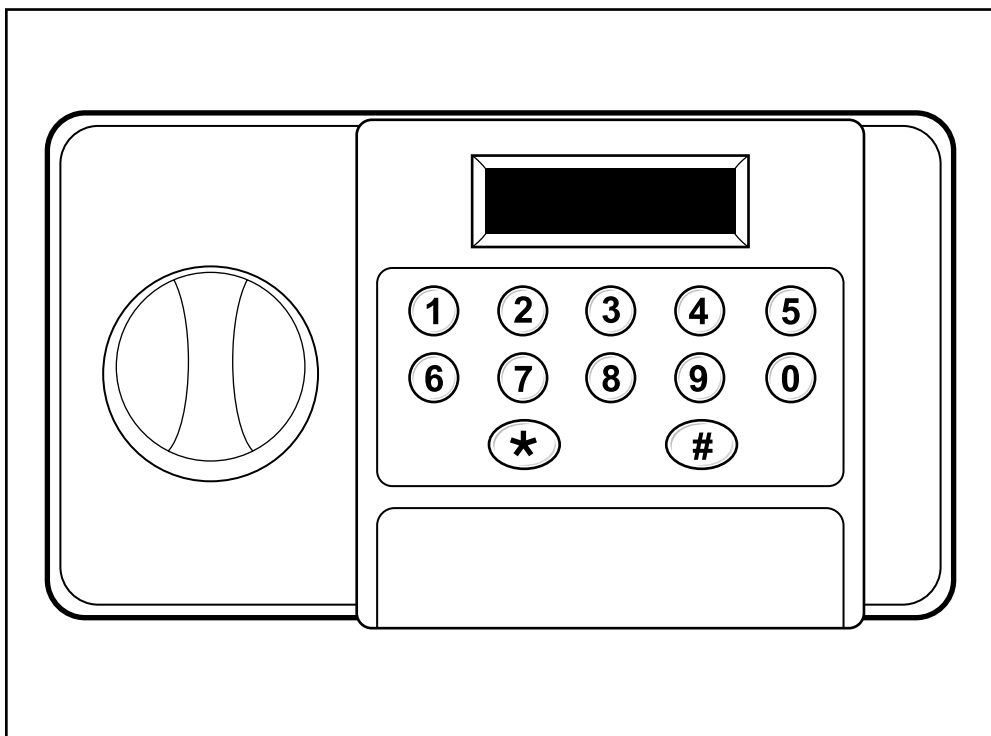


challenge[®]

Digital Home Safe

THIS MANUAL CONTAINS IMPORTANT INFORMATION REGARDING THE
OPERATION AND MAINTENANCE OF THE SAFE
COMPLETELY READ AND UNDERSTAND THE MANUAL BEFORE SECURING ITEMS IN THE SAFE
SAVE THIS MANUAL FOR FUTURE REFERENCE

MODELS: S-25LCD(II)B



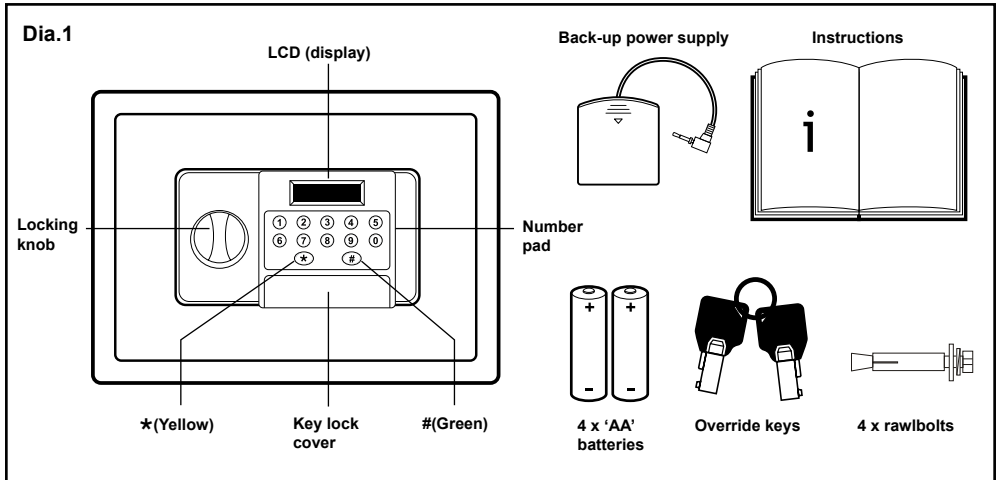
NEVER LOCK YOUR SPARE OVERRIDE KEYS OR THE INSTRUCTION MANUAL IN THE SAFE.
ONCE THE BATTERIES DEplete, YOU WILL NEED TO USE THE KEYS TO OPEN THE SAFE.
SPARE KEYS ARE UNAVAILABLE!



Always Read the Instruction Manual



SAFE DIAGRAM



NOTE: This safe is NOT fire proof.

NOTE: This safe has no cash rating.

CONTENTS

- 1 X Instruction book
- 2 X Manual override keys
- 1 X Backup power supply
- 1 X Internal mat
- 4 X 'AA' Batteries
- 4 X Rawbolts

SPECIFICATION

	S-25LCD(II)B
SIZE :	35 (w) x 25 (h) x 25 (d) Cm
NET WEIGHT:	9.5Kgs
POWER SUPPLY:	4x 'AA' 1.5V Batteries
INTERNAL VOLUME:	21.72 Litre

IMPORTANT INFORMATION

This safe can be programmed with two sets of codes, User and Master. After opening the safe and installing the batteries you should change the USER and MASTER PINS, from the factories pre-set codes, for security reasons. You could give the user code to a guest while maintaining the master code.

OPERATING THE SAFE FOR THE FIRST TIME


Use the Manual override key to open the safe.

- Remove the plastic key lock cover (dia 1).
- The number under the cover is the key number. Replacement keys are unavailable!
- Insert the override key; turn it anti-clockwise, at the same time turn the locking knob clockwise and pull open the safe.
- See **BATTERY REPLACEMENT**
- Keep the safe door open until you have set the PIN code.

LCD DISPLAY

- To hide the numbers from being displayed when entered, Press “#” followed by “*”, then enter your PIN. “o” will be displayed instead of the number.

KEY PAD

- If you make a mistake when entering the PIN, press “★”, the last digit entered will be deleted.
- Each time a button is pressed, a beep will be heard. This is a safety feature so that you will know when the safe is being accessed and cannot be switched off.
- If you Press “★”, “  bELL on” will be displayed. This will display the battery power status. However, there is no function to switch the bELL (beep) off.

PROGRAMMING YOUR PIN NUMBER *(personal identification number)*

DEFAULT FACTORY USER PIN: 1234 : DEFAULT FACTORY MASTER PIN: 123456

Either of these PIN Codes can be set from 1 to 8 digits.

WE STRONGLY RECOMMEND THAT 4 OR MORE NUMBERS ARE USED AS THE USER CODE AND 6 OR MORE FOR THE MASTER CODE.

Keep PIN codes in a safe place. Do not use personal information like birthdays, telephone numbers etc.

NOTE: The following steps will only change one PIN, either the User or Master PIN based on the PIN you entered in step 2.

In order to change the other PIN, simply repeat steps above, using the other code at step 2.

Write down your PIN codes so you do not forget it. (any combination of numbers from 4 to 8 digits)

1. Press “#”
2. Enter the either the User PIN or the Master PIN
3. Press “#”
4. The safe will beep 3 times and display “OPEN”.
5. Press “★” within 10 seconds.
6. The LCD will display “-----”.
7. Enter your New User or Master PIN
8. Press “#”
9. The LCD will display “-----”
10. Re-enter your New User or Master PIN.
11. Press “#”
12. The LCD will display “Into” for a few seconds
13. Your new PIN has been set.

While the door is open familiarise yourself with the door opening procedure, and leave the door open until you are satisfied that you fully understand the opening and closing method. You can re-set the PIN at any time by following the above procedure.

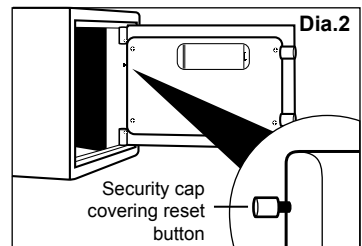
RESETTING THE PIN CODE TO THE FACTORY DEFAULTS PIN CODES *(personal identification number)*

The safe can be reset back to the factory default PIN codes by pressing the red button situated on the inside cover of the safe door (Dia 2).

Open the safe door. Remove the reset button’s security cap by unscrewing it.

Press the red reset button. The display will show “CLEAR”; all PIN codes will revert back to the factory default PIN codes.

Please refit reset button’s security cap for security reasons.



OPENING THE DOOR USING YOUR PIN NUMBER *(personal identification number)*

- Press “#”
- Enter your PIN (either your user or master PIN code)
- Press “#”
- The safe will beep 3 times and display “OPEN”.
- Turn the locking knob clockwise within 10 seconds and pull the safe door open.
- If the PIN code is entered incorrectly the LCD will display “Error”. Wait for the display to clear and try again.

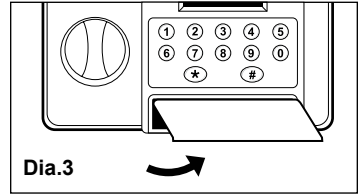


If the voltage of batteries is low the LCD will show "Lo-bAtt". The batteries must be replaced.

OPENING THE SAFE USING THE OVERRIDE KEY

Use the Manual override key to open the safe.

- Remove the plastic key lock cover (dia 3)
- Insert the override key; turn it anti-clockwise, at the same time turn the locking knob clockwise and pull open the safe.

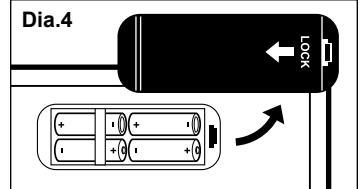


Dia.3

BATTERY REPLACEMENT

The digital safe uses four 'AA' type batteries (supplied).

- Remove the battery cover on the rear of the door (dia 4). Push the catch in and pull out the cover.
- Install the 4x 'AA' batteries supplied (dia.4). Ensure correct polarity.
- Replace the battery cover.
- The unit will beep, and the display will show "o" travelling from one side to the other followed by "ALLrEADY". The unit is now ready to be programmed.
- Keep the safe door open until you have set the PIN code.
- Press #
- If the voltage of batteries is low, the LCD will show "Lo-bAtt". The batteries must be replaced.

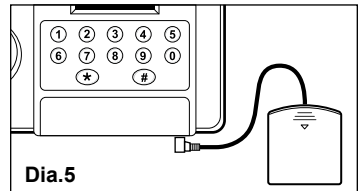
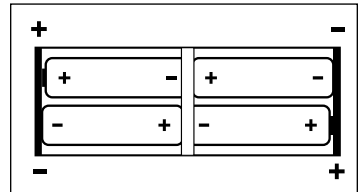


Dia.4

BATTERY PACK

If your batteries are flat, and you are unable to find the override keys, you can use the Battery Pack to power the keyboard.

Fit four 1.5V 'AA' batteries in the battery pack. Plug the jack plug of the pack into the battery backup socket on the panel of the keypad. (dia.5).



Dia.5



The battery life is approximately one year.

Make a note of the battery replacement date; they should last approximately one year.

However, we recommend checking the batteries every 6 months just to make sure.

If power is removed from the safe the set PIN code may reset. If this happens use the factory default Pin codes.

SECURING YOUR SAFE

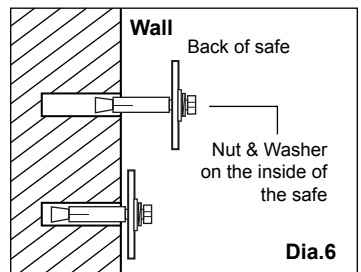
ADVICE: WE STRONGLY RECOMMEND THAT YOU SECURE YOUR SAFE TO A WALL OR FLOOR FOR SECURITY REASONS.

You may wish to secure your safe to a fixed part of the house (i.e. stone wall or wooden beam).

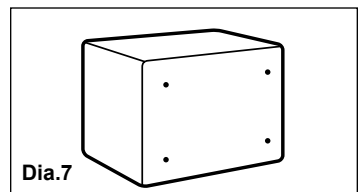
This can be achieved by using 2 of the 4 rawlbolts supplied in the back of the safe or using the 4 rawlbolts in the base of the safe.

Use the holes in the safe to mark where you need to drill. Loosely attach the rawlbolts onto the safe with the nuts and washers provided. Hold the safe over the drilled holes and locate the rawlbolts into these holes (Dia 6). Tighten the nuts from the inside of the safe to secure firmly.

Note : The rawlbolts are packed inside the safe



Dia.6



Dia.7

TROUBLE SHOOTING

	PROBLEM	CAUSE	SOLUTION
1	Can I get a replacement key/ extra key?		Replacement keys are not available due to security reasons.
2	The keypad becomes inoperable	Low or depleted batteries	Use override keys or Battery Pack and replace batteries.
3	My PIN works, however, the safe won't open	Low batteries. Will operate the keypad but not the lock relay.	Use override keys or Battery Pack and replace batteries.
4	I have lost the keys, battery pack and forgotten the PIN number, can I obtain spare key or battery pack?.		Spare keys are unavailable, but we can supply you with a spare battery pack at a small charge.
5	I am experiencing problems using the back up key; it is unable to slide smoothly into the keyhole.		Spray inside the keyhole with WD40, leave for a few minutes and then try again.
6	We recently changed the batteries in the safe, the safe has reset the code itself, and the code I've been using is no longer valid?	If the batteries are completely depleted for more than a day then the safe will not retain the code.	Try the factory default code or use the override key; then refer to the user manual to reset your original code or to enter a new code.
7	When I enter # the LCD displays "Lo-bAtt".	The batteries are depleted.	Immediately replace the batteries.
8	The batteries I bought don't fit the safe?	Batteries can vary in size.	Try another brand.
9	When I use the override key, I can't open the door.		Ensure that you are tuning the key anti-clockwise, holding it in that position and then turn the locking knob clockwise to release the catch.



**Always read the
instruction manual**



WARNING!

**NEVER LOCK YOUR SPARE OVERRIDE
KEYS OR THE INSTRUCTION MANUAL
INTO THE SAFE**

SPARE KEYS ARE UNAVAILABLE

HELPLINE Telephone Number 02083 916 767
Alternatively check the Q&A on our website
www.hilka.co.uk/faq.php

HELPLINE

In the unlikely event of a defect occurring please contact our Helpline.
Office hours 9am – 4pm, Monday-Friday. Outside office hours or during peak times you will be
directed to an
answer phone. Please leave your name, a brief description of your enquiry and your number.
One of our operators will contact you as soon as possible.
Telephone Number 02083 916 767
Alternatively check the Q&A on our website www.hilka.co.uk/faq.php

NOTE:

These important safeguards and instructions cannot cover all possible conditions and situations
that may occur. It must be understood that common sense and caution are factors, which cannot
be built into any product. These factors must be supplied by the person using this product.

Manufactured on behalf of Home Retail Group

**489 - 499 Avebury Boulevard,
Central Milton Keynes,
MK9 2NW**