

Updating the Diagnostic Scanner Tool

Please note:

Internet access required to update the tool.

The up-date files are not stored on the disc, these will need to be downloaded from the website given below.

Installing the update program:

Insert the CD into your computers drive.

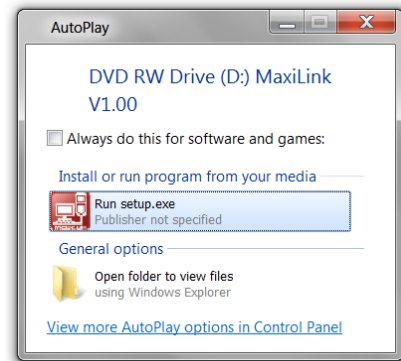
If you do not have a CD this follow this link and download the software.

<http://www.auteltech.com/up409.htm>

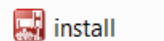
Click on **Maxi-Link**, download and run the file.

This version will also run on windows 7.

If auto play is activated, click on Run setup.exe.



If auto play is not activated, look for your CD/DVD drive and click on install.



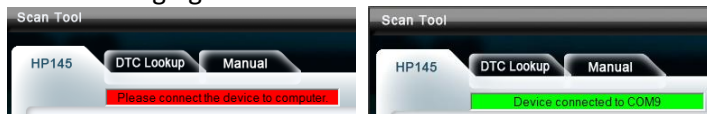
The InstallShield Wizard will run.

Keep clicking on Next> until you get to install. Click install.

When completed click on All Programs on your PC and find the MaxiLink folder.

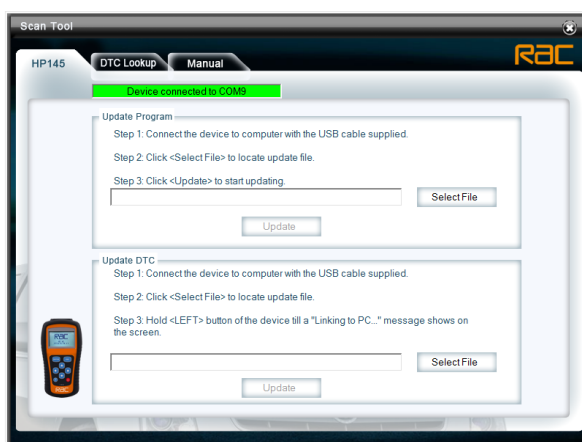
Click on MaxiLink to start the program.

If you see the red bar, please connect the diagnostic unit to the computer via the USB lead provided. The bar will go green and indicate that the unit is connected.



You now have 3 options.

- HP145 – This will allow you to update you device.
- DTC Lookup – This will allow you to look up any Diagnostic Trouble Codes
- Manual – This is the devices manual in PDF version.



Updating the device

IMPORTANT! Please check the Version of software and DTC on your tool before updating as you may already have the current version.

Log onto the following link.

<http://www.auteltech.com/up409.htm>


Updates For MaxiScan® MS409

Please Note:

The image displayed may look different from your device.

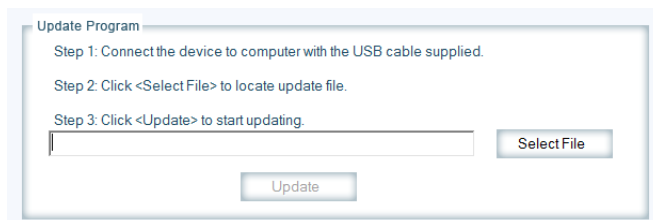
The RAC-HP145 is the same as Model MS409

Update File

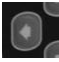
	Type	Version	Update log	Language	Size	Date
	Program Update			English French Germany		
	DTC Update			Dutch Spanish		

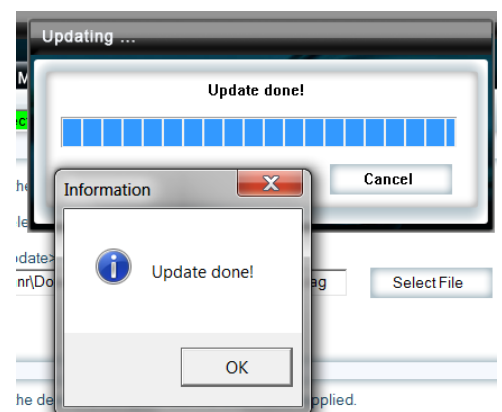
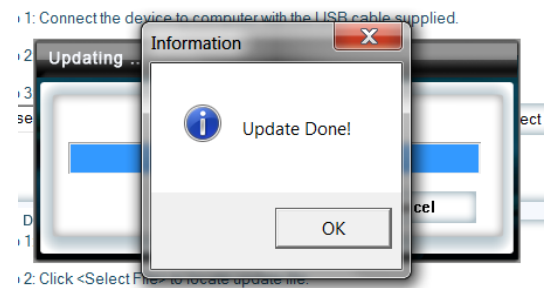
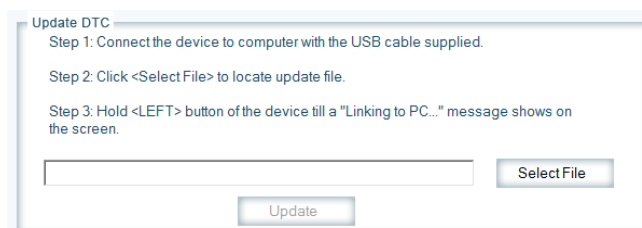
Updating the program software.

- Click on Program Update and save the file where you will be able to find it.
- The file will end with .dag
- Click on Select File and locate the .dag file
- Click on the file and select open.
- Click on Update



Updating the Diagnostic Trouble Codes

- Click on DTC Update and save the file where you will be able to find it.
- The file will end with .AUT
- Click on Select File and locate the .AUT file
- Click on the file and select open.
- **Hold  left arrow button down until the device displays "Linking to PC... -Please Wait-"**
- Click on Update



You may find that once you have updated the Program Software that your device now displays "AUTEL" at start up. This is normal and will not affect the function of the tool.