

Hilka

82951000
82952000









1 TONNE / 2 TONNE CAPACITY FOLDING HYDRAULIC SHOP CRANES



ASSEMBLY AND OPERATION

PLEASE RETAIN THIS LEAFLET
FOR FUTURE REFERENCE

Safety Advice

-  Read instructions carefully before use. Failure to comply with any of these cautions may cause serious injury
-  Check for damaged welds and be sure all fasteners are secure.
-  Always work on a solid level surface.
-  Never roll loaded engine hoist across a surface with cracks, holes or other obstacles which might impede movement of wheels.
-  Never work under an engine mounted on this hoist
-  Never exceed the engine hoist rated capacity.
-  When not using hoist always leave ram in down lowest position
-  Do not exceed rated load capacity.

Maintenance

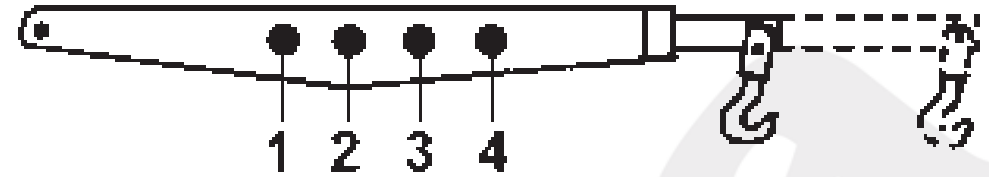
Check ram and plunger every 3 months for any signs of rust or corrosion

Clean as needed and wipe with a clean cloth

When adding or replacing oil. Always use a good grade of hydraulic jack oil, avoid mixing types of oil.

Don't use brake fluid, alcohol or motor oil, when adding oil you must be very careful not to permit dirt or any other foreign matter to get into the system.

Technical Data



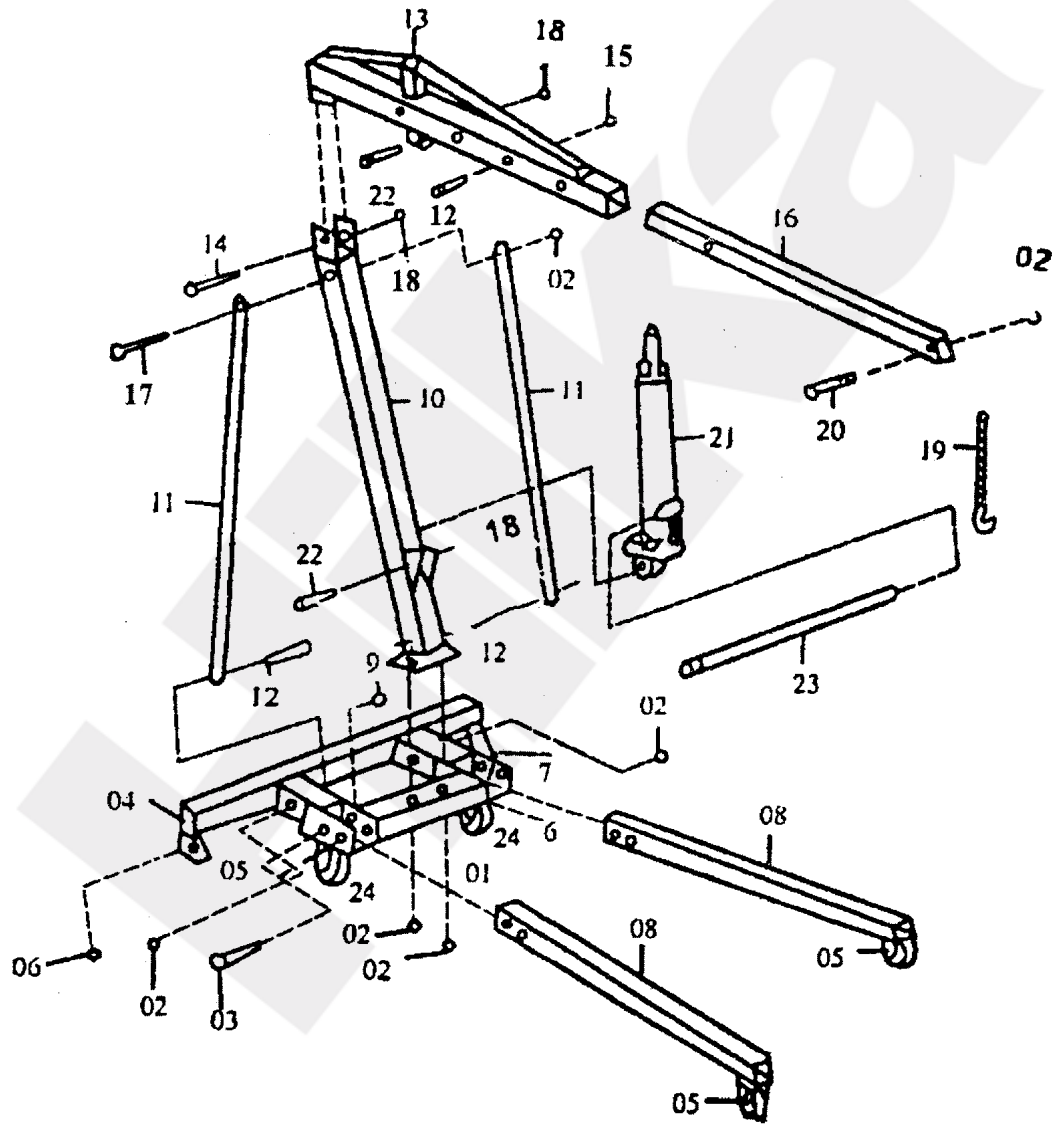
82951000 - 1 Tonne Crane

	Stage 1	Stage 2	Stage 3	Stage 4
Lifting Capacity (kg)	1000	750	500	250

82952000 - 2 Tonne Crane

	Stage 1	Stage 2	Stage 3	Stage 4
Lifting Capacity (kg)	2000	1500	1000	500

Parts Guide



Parts Guide

PARTS

Ref	Description	Qty
01	Base	1
05	Castor wheel	4
08	Base extension	2
10	Main post	1
11	Support straps	2
13	Boom	1
16	Boom extension	1
19	Hook & chain	1
21	Jack	1
23	Jack handle	1
24	Castor wheel	2

HARDWARE

Ref	Description	Qty
02	Nut (M14)	6
03	Pin (M16x110)	4
09	Bolt (M14x100)	2
12	Bolt (M14x90)	3
14	Bolt (M20x120)	1
15	Nut (M14)	1
17	Bolt (M14x100)	1
18	Nut (M16)	3
20	Bolt (M14x80)	1
22	Bolt (M16x75)	2

Assembly

Work on a solid level concrete floor when assembling your crane. If this recommendation is not observed your crane could be out of alignment after assembly, this is dangerous.

Bolt and nut sizes and quantities are provided on the hardware list.

1. Attach castors (5) to strut (8) using appropriate bolts and nuts.

Note: the two castors located in the centre section (30) differ in size to castors (5).

2. Position strut legs (8) onto main frame (1), secure with appropriate bolts and nuts and locate pins (3) to create a solid work platform.
3. Position main post (10), support straps (11) and attach boom (13).
4. Position main power jack in bracket provided. Fasten lower section first then locate top section of jack onto boom (13) and secure with bolt and nut provided.
5. Secure chain and hook assembly (19) onto boom extension (16) using bolt and nut provided.
6. Slide boom extension into main boom and secure with bolt and nut provided.

Assembly

7. Check all bolts and nuts are securely fastened.

Note: the 2 centre wheels will only make contact with the ground when a weight is lifted. This flexing is normal.

8. Before first use, purge the jack of air that may have entered during transportation. Open the release valve (turn anti-clockwise) while holding the end of the ram cylinder down. Operate the pump handle rapidly several times, and repeat until the spongy feeling disappears.
9. When the ram cylinder is extended for the first time lubricate fully with light grade hydraulic oil. It is also recommended that the twin pump push rods be lubricated. This will prevent damage to seals.

Operation

1. Locate the slotted end of the pump handle on to the Hydraulic Pressure Release Nut at the base of the Ram assembly.
2. Turn the nut clockwise until tight (do not over-tighten).
3. Remove the handle and locate it in the pump collar. Pump the ram to raise the jib to the required height.
4. Lower the arm by locating the slotted end of the pump handle on to the pressure release nut and **very slowly** turning in an anticlockwise direction. The rate of descent can be adjusted by turning the release nut.

HILKA

Hilka

Hilka Tools (UK) Ltd
Roebuck Road
Chessington
KT9 1EU

t. 0208 391 7570
f. 0208 391 7575
e. sales@hilka.co.uk
w. www.hilka.co.uk